

Review of 2008

2008 saw Gary's work continue to grow in strength and recognition. The year saw a good variety of work and included, for the first time in many years, work in an exhibition. The year also saw yet another award following the batch of awards in 2007 and further developments in the US which will produce a major US commission for 2009. Unfortunately 2008 ended with a disaster as the artists' studio complex in which Gary works is to be demolished to make way for yet another shopping Mall...

Gary
drostle
art for landscape & architecture

40 Strand House
Merbury Close
London
SE28 0LU
United Kingdom
TEL: +44 (0)20 8316 7734
EMAIL: gary@drostle.com
MOB: +44 771 952 952 0

An Indian myth in shimmering glass

In 2007 Gary received a scholarship from the Queen Elizabeth Scholarship Trust to study glass mosaics at the world famous Orsoni works in Venice. The first commission of 2008 saw those skills put into practice with the creation of a panel mosaic for a private client in Islington, North London. The mosaic, made entirely from the fabu-

lous Orsoni hand made Glass Smalti, depicts the Indian myth of the two headed 'Bharunda Bird'. The mosaic was fabricated using the direct technique onto a light weight Hexlite panel. Hexlite aluminium core panels offer the highest specification for exterior panel mosaics and have been widely used by the British Museum for the restoration of their Roman Mosaic collection.

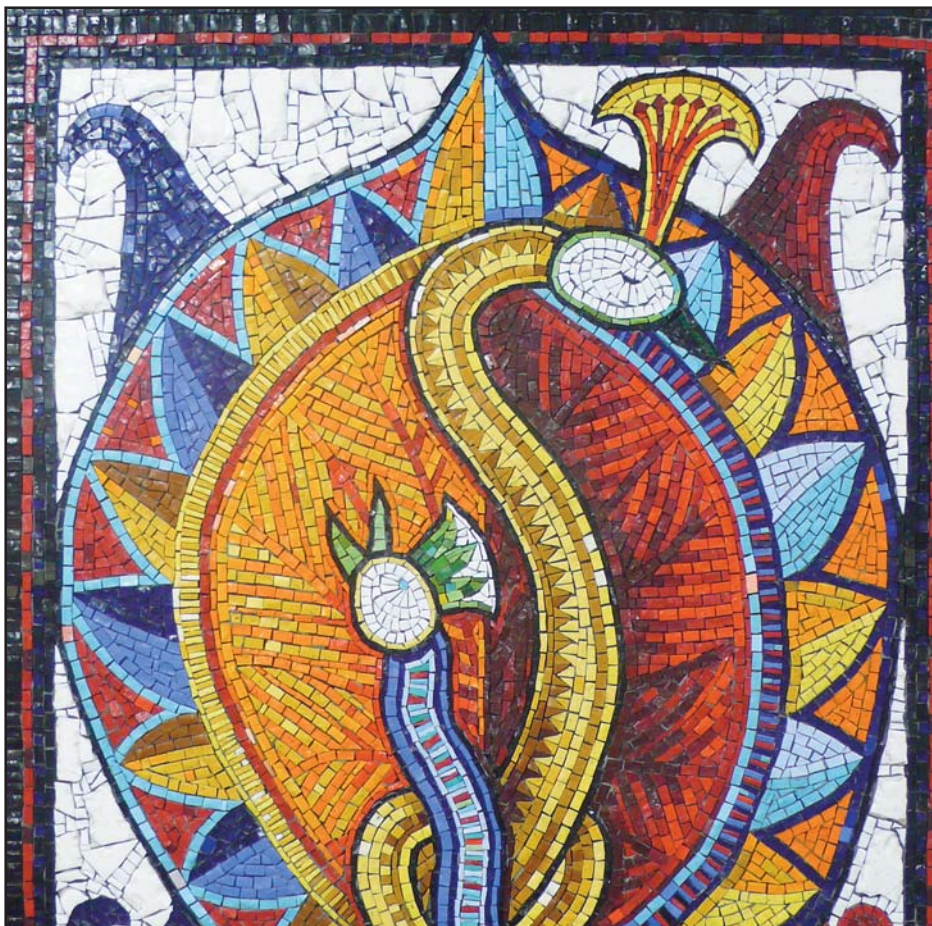


Best Architectural Mosaic 2008

2008 began with a bang as Gary was awarded the prize for 'Best Architectural Mosaic' at the 'Mosaic Arts International 2008' in Miami, Florida.

Every year the Society of American Mosaic Artists, SAMA, hold their convention around a high profile mosaic exhibition. The juried exhibition is one of the high points of the mosaic year and in 2008 it was held in the Bakerhouse Art complex in Miami.

Gary's 25 foot high mosaic sculpture for Erith in Kent was selected to feature in the exhibition, which includes photographs of large scale commissions as well as original gallery mosaics from artists around the world. The giant glass encrusted sculpture won the prize for the best Architectural work.





Stories of Bishops, sailors and grape vines.

This three metre diameter floor mosaic in tough unglazed ceramic is part of a major refurbishment of Valentines Park in Ilford, Essex. The mosaic was commissioned by Redbridge Council for Bishops Walk, as a focal point for the Parks renewal.

The mosaic represents elements from the Parks history including its association with the East India Company, Bishop Thomas Ken (d.1711) and the 'Great Vine'. The design was arrived at in collaboration with the local council and Landscape designers 'Land Use Consultants' and was overseen

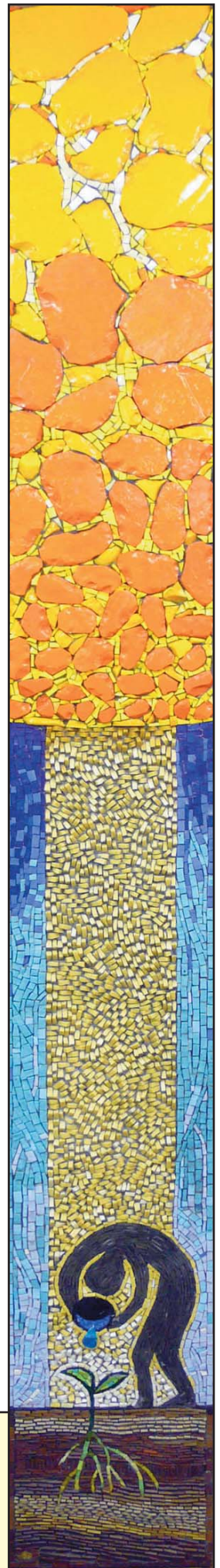
by the main contractor 'Crispin & Borst'. The Valentines Park Mosaic has been selected for exhibition in the 2009 **'Mosaic Arts International'** exhibition to be held at the Museum of Man in San Diego, California.

Speaking about the completed mosaic Nigel Burch, Redbridge Council Project Director said:

"I was impressed with the care shown on site and the finished product. I am happy to say it has already been much admired."

Exhibited at the 'Elements' exhibition of contemporary mosaics in Salisbury Museum in 2008 this large wall panel mosaic is made from Venetian Smalti and ceramic.

The design has an environmental message and represents how mankind relationship with the elements has changed from the traditional notion and that we now hold the balance as our actions shift the delicate balance of our planets elements: earth; air; water and fire (the sun).



A calm reflective pool for Carterton



Carterton in Oxfordshire received a 2m diameter mosaic focal point for their new town centre square in 2008.

Carterton Fast Forward Partnership working with the Town Council successfully won funding for the regeneration of the towns central open space from the 'Big Lottery

Peoples Millions Competition' in November 2007. A key element to this regeneration was a floor mosaic focal feature. Gary was appointed to carry out the creation of this artwork and, following consultation with community groups and design workshops with two local schools, drew up a selection of design options. The Town Council then consulted with the local community and the fishpond design was chosen as the preferred option .

Gary ran a further day of mosaic making workshops for children and local residents before the mosaic was installed in the new square.

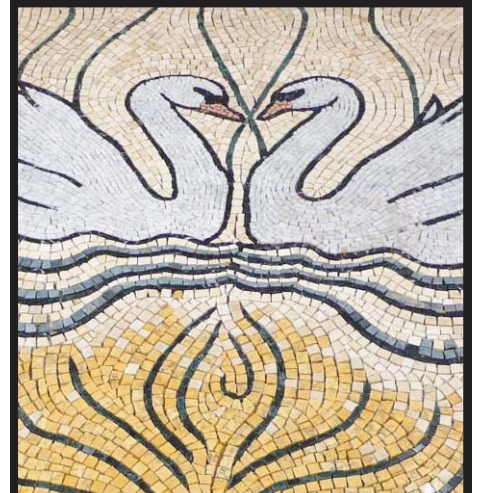
The mosaic was officially unveiled with the square on 5th December 2008.



Time for coffee

Only the one painted mural was commissioned in 2008 and that squeezed in right at the end of the year.

Evoking the remains of London's Roman Wall this mural was painted as part of the refurbishment of Starbucks London Wall store.



MARBLE MAGIC

1700mm diameter marble mosaic floor for Mill Beck near Carlisle. Using a mixture of Travertines, Rossa di Verona, Nero Marquina, Carrara and Alpi Verde marble this classical style floor mosaic was made for an entrance hallway.

It's good to be me



Now underway in the studio Gary is currently working on two large mosaic murals for the refurbishment of the Terrick Street underpass, part of Transport For London's major improvements for the A40 at White City, London.

Working on the theme "It's good to be me" Gary began the design process for this mosaic with a visit to the National Portrait Gallery in London with the year 4 pupils of

Bentworth Primary School at White City. Following the gallery talk and visit the children drew and painted self portraits.

The portraits, some pictured here, are the result of combining the drawn and painted works together.

The portraits will be digitally printed onto tiles and incorporated into the two mosaics.

Installation of the mosaics is expected late in 2009 following the refurbishment by Amey PLC.



For a copy of Gary's Practice Profile just post this slip to:-

Gary Drostle
40 Strand House
Merbury Close
London
SE28 0LU

name
job
company
e-mail

address
.....
.....
.....
.....
.....
post code

Gary Drostle has been creating site specific art for over twenty years. His previous work includes murals, mosaics and sculptures for parks, public buildings, town centres, hospitals and private and commercial sites across the UK and in the USA. Gary is internationally recognised as a leading mosaic artist and has won numerous awards for his work.



You can find out more by visiting www.drostle.com
If you have a specific enquiry you can e-mail gary@drostle.com or phone direct on 0771 952 9520



Other News

The bulldozers approach

It looks as though the axe has finally fallen on Gary's studio in Greenwich. **Greenwich Council** has given the go ahead for the demolition of the studio complex housed in former council offices in the centre of Greenwich. The demolition is to make way for the inevitable shopping mall and will displace around twenty artists as well as other small businesses and a large chunk of the market. Studio space is very hard to find in London and so far no alternative has been found.

BAMM President

Gary has been re-elected for another year as President of the **British Association for Modern Mosaic**. The Association was formed to promote excellence and awareness of mosaic art in 1999 and Gary is it's second President.

Master Classes

Gary will be running a series of Master classes in the Indirect Technique of mosaic making and lecturing on Classical Andamento and mosaic sculpture at this years conference of the **Society of American Mosaic Artists** in San Diego.

In the pipeline

Gary has just started design work on a triptych of floor mosaics for **Weston-super-Mare**, commissions currently being negotiated for 2009 include major commissions in **Iowa** and **Bexleyheath**

More news...

You can keep up with Gary's work by checking the online newsletter at www.drostle.com/newsupdate.html